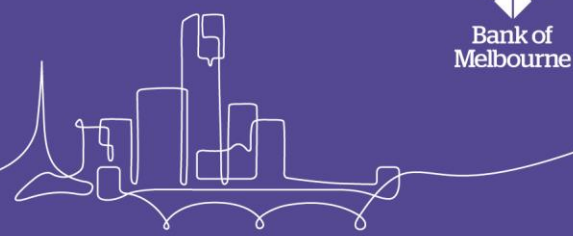




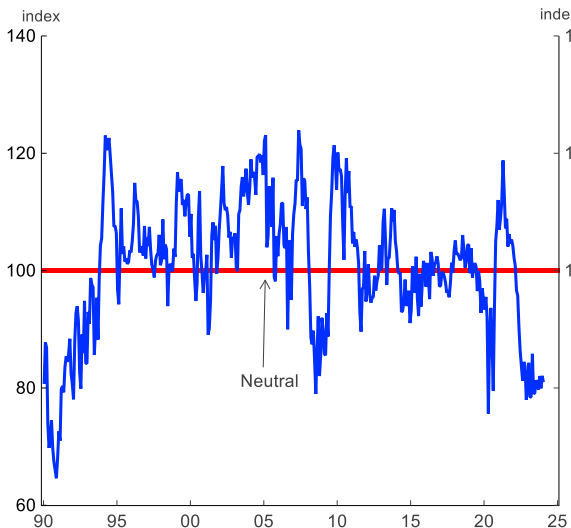
Tuesday, 16 January 2024



## Consumer Sentiment Christmas Not Enough To Buoy Spirits

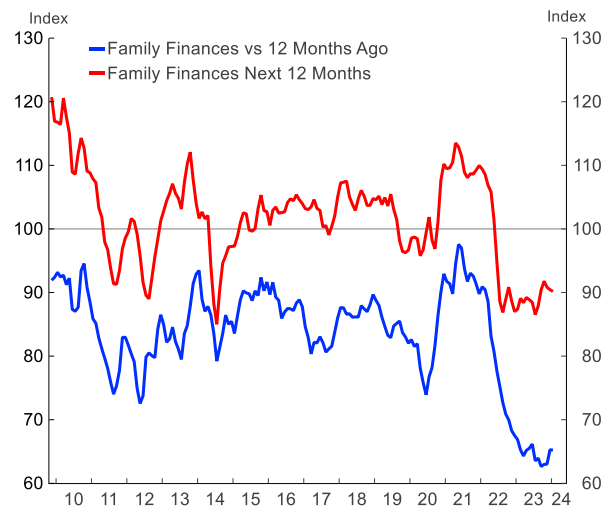
- The Westpac-Melbourne Institute consumer confidence index fell 1.3% in January to 81.0. Any Christmas cheer was short lived as consumers remain deeply pessimistic.
- The index has been below the neutral level of 100 for almost two full years – 23 consecutive months. This is the longest run of below neutral readings since the 1990s recession – when confidence was below 100 for almost five years – 57 consecutive months.
- Three of the five sub-indices declined and all remain below the 100 level that separates optimists from pessimists. Views on family finances over the past 12 months plunged 7.6% in the month to an extremely weak 63.0. Many families likely got a rude shock as they sat down and formed their New Year’s resolutions. Household finances have been under pressure from inflation, higher taxes from bracket creep, and elevated interest payments.
- But some households are starting to see the light at the end of the tunnel. Views on family finances and the economy over the next 12 months rose by 2.9% and 3.9%, respectively.
- 52% of consumers expect the Reserve Bank (RBA) to continue hiking, down from 60% in December. The chance of further hikes has reduced as inflation and other recent data have surprised to the downside. This share is likely to fall in future if the RBA extends its pause.
- Sentiment is likely to remain under pressure in the near term, but a gradual improvement should take hold later in 2024. Inflation remains elevated but is falling and this is expected to continue. Stage 3 tax cuts will provide some relief from bracket creep. The Government has flagged targeted cost-of-living support in the 2024-25 Budget, and we expect the RBA to remain on hold from here and to be able to begin cutting rates later in 2024.

Consumer Sentiment Index



Sources: Melbourne Institute of Applied Economic & Social Research; Macrobond

Views on Family Finances  
3-month Moving Average



Sources: Melbourne Institute of Applied Economic & Social Research; Macrobond

## Contact Listing

### Chief Economist

Besa Deda  
dedab@bankofmelbourne.com.au  
(02) 8254 3251

### Senior Economist

Jarek Kowcza  
Jarek.kowcza@bankofmelbourne.com.au  
0481 476 436

### Senior Economist

Pat Bustamante  
pat.bustamante@bankofmelbourne.com.au  
0468 571 786

### Economist

Jameson Coombs  
jameson.coombs@bankofmelbourne.com.au  
0401 102 789

### The Detail

The information contained in this report (“the Information”) is provided for, and is only to be used by, persons in Australia. The information may not comply with the laws of another jurisdiction. The Information is general in nature and does not take into account the particular investment objectives or financial situation of any potential reader. It does not constitute, and should not be relied on as, financial or investment advice or recommendations (expressed or implied) and is not an invitation to take up securities or other financial products or services. No decision should be made on the basis of the Information without first seeking expert financial advice. For persons with whom Bank of Melbourne has a contract to supply Information, the supply of the Information is made under that contract and Bank of Melbourne’s agreed terms of supply apply. Bank of Melbourne does not represent or guarantee that the Information is accurate or free from errors or omissions and Bank of Melbourne disclaims any duty of care in relation to the Information and liability for any reliance on investment decisions made using the Information. The Information is subject to change. Terms, conditions and any fees apply to Bank of Melbourne products and details are available. Bank of Melbourne or its officers, agents or employees (including persons involved in preparation of the Information) may have financial interests in the markets discussed in the Information. Bank of Melbourne owns copyright in the information unless otherwise indicated. The Information should not be reproduced, distributed, linked or transmitted without the written consent of Bank of Melbourne.

---

Any unauthorised use or dissemination is prohibited. Neither Bank of Melbourne- A Division of Westpac Banking Corporation ABN 33 007 457 141 AFSL 233714 ACL 233714, nor any of Westpac’s subsidiaries or affiliates shall be liable for the message if altered, changed or falsified.

---